

ORDER OF THE BOARD OF
AGRICULTURE AND FISHERIES.

(DATED 14TH SEPTEMBER 1915.)

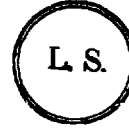
(SWINE-FEVER INFECTED AREA.)

The Board of Agriculture and Fisheries, by virtue and in exercise of the powers vested in them under the Diseases of Animals Acts, 1894 to 1914, and of every other power enabling

them in this behalf, do order, and it is hereby ordered, as follows:

The Orders described in the Schedule to this Order are hereby revoked on the seventeenth day of September, nineteen hundred and fifteen.

In witness whereof the Board of Agriculture and Fisheries have hereunto set their Official Seal this fourteenth day of September, nineteen hundred and fifteen.



A. W. Anstruther,
Assistant Secretary.

SCHEDULE.

Orders Revoked.

No.	Date.	Subject.
9455	11 June 1915.	Declaration of a Swine-Fever Infected Area in Dorset.
9474	15 July	Contraction of the limits of the above-mentioned Area so as to comprise the following Area, namely:—An Area in the administrative county of Dorset, comprising the parishes of Corfe Castle, Studland, Swanage, Langton Matravers, and Worth Matravers.

Copies of the above Order can be obtained on application to the Secretary, Board of Agriculture and Fisheries, 4, Whitehall Place, London, S.W.

ORDER OF THE BOARD OF
AGRICULTURE AND FISHERIES.

(DATED 15TH SEPTEMBER 1915.)

(SWINE-FEVER INFECTED AREA.)

The Board of Agriculture and Fisheries, by virtue and in exercise of the powers vested in them under the Diseases of Animals Acts, 1894 to 1914, and of every other power enabling

them in this behalf, do order, and it is hereby ordered, as follows:—

The Order described in the Schedule to this Order is hereby revoked on the twenty-first day of September, nineteen hundred and fifteen.

In witness whereof the Board of Agriculture and Fisheries have hereunto set their Official Seal this fifteenth day of September, nineteen hundred and fifteen.



A. W. Anstruther,
Assistant Secretary.

SCHEDULE.

Order Revoked.

No.	Date.	Subject.
9388	20 March 1915.	Declaration of a Swine-Fever Infected Area comprising the following area, namely:—An Area comprising the county borough of Middlesborough.

Copies of the above Order can be obtained on application to the Secretary, Board of Agriculture and Fisheries, 4, Whitehall Place, London, S.W.