

AIR MINISTRY NOTICE TO AIRMEN.

No. 117 of the year 1920.

SWITZERLAND: CUSTOMS AERODROMES AND SEAPLANE STATIONS, ETC.

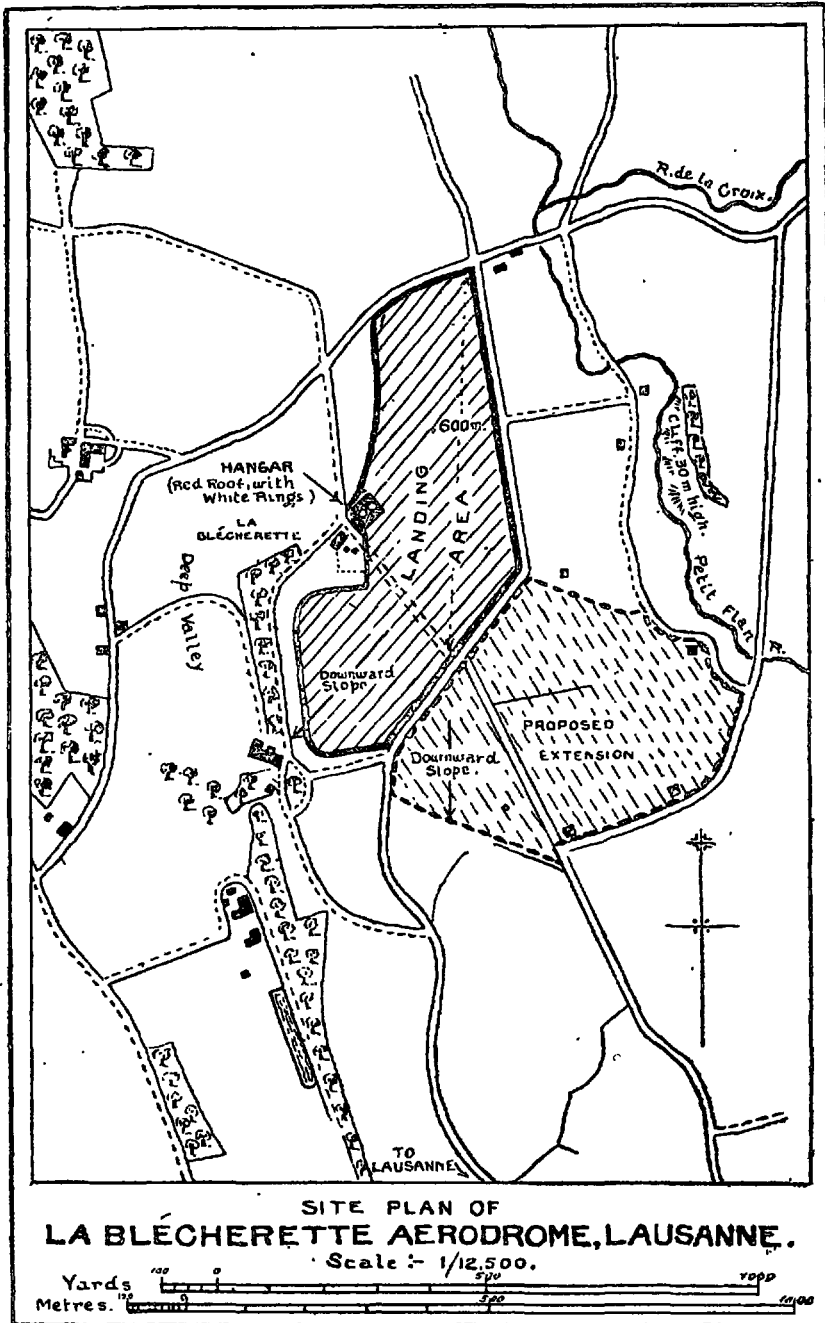
It is hereby notified:

(1) The Swiss Government have formulated

Winterthur.
Zürich.

(b) Over other populated centres aircraft are not permitted to fly at a lower height than 500 metres (1,640 ft.).

(2) For the present, civil aircraft arriving in or departing from Switzerland are only permitted to use those aerodromes and seaplane



the following rules for aircraft flying in Switzerland:—

(a) Aircraft are not allowed to fly at a lower height than 1,000 metres (3,281 ft.) above the undermentioned towns:—

- Basle.
- Berne.
- Bienne.
- Geneva.
- Lausanne.
- Lucerne.
- St. Gall.

No. 32125.

stations at which the Customs authorities have a control station in operation.

The following is a revised list of such stations:—

(a) *Customs Aerodromes.*

DUBENDORF. Joint civil and military aerodrome.

Position.—Situated approximately 1 km. to the E. of Dubendorf village, and about 8 km. E.N.E. of Zürich.

Dimensions for Landing.—500 × 300 metres.